

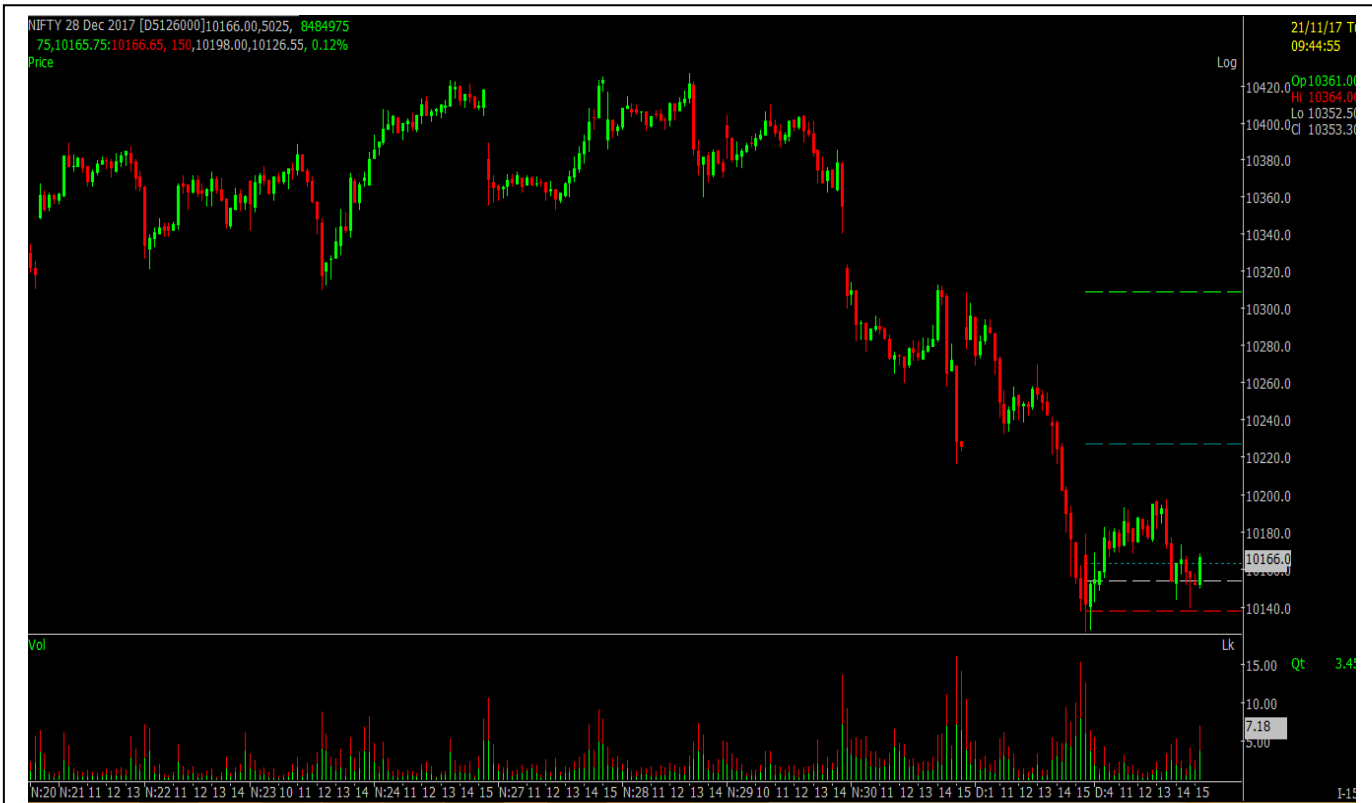


BENCHMARK INDICES

NIFTY FUTURE INDEX

S&P CNX Nifty future closed **up 5.95** points at **10127.75**. Indian Stock Market would open gap positive for the day. Indian Stock Market is still in negative zone. Overall, market is still negative and traders can continue to go short at every positive movement in the market. Investors would remain cautious ahead of RBI Policy meeting on Tuesday and upcoming Gujarat Elections. Now **10271** for Nifty. Next logical target for Nifty is at **10094-10013** in upcoming days if Nifty managed to hold below **10271**.

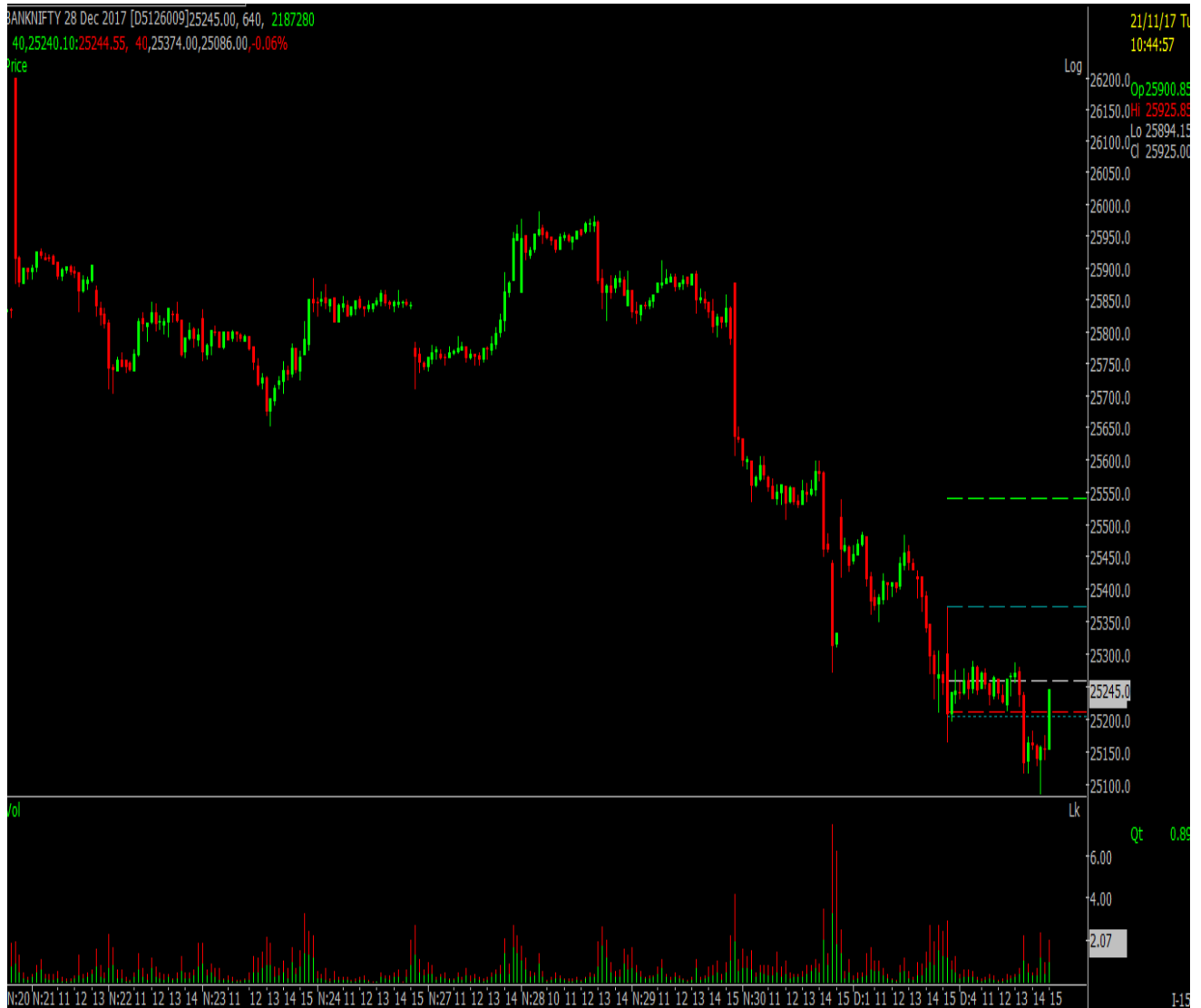
Today Nifty traded with a positive sentiment and closed on moderate gain. Its resistance level is **10500** and support level is **10080 levels**.



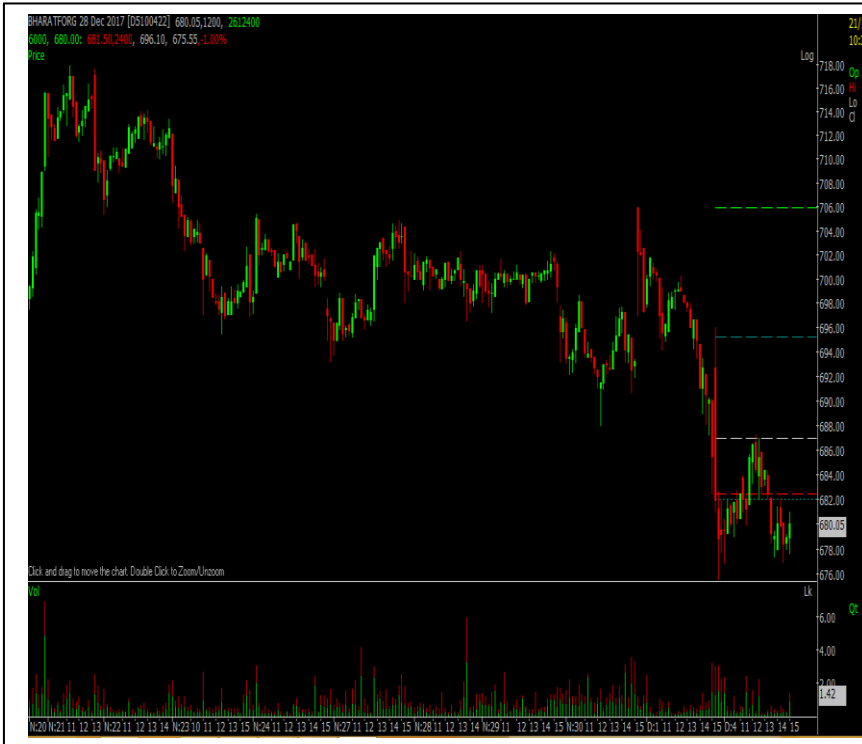
BANKNIFTY FUTURE INDEXS

BANKNIFTY FUTURE was closed to **25075.10 (- 116.85 POINTS DOWN)**.

Today Bank nifty opened on flat note and which traded with a negative sentiment and closed on moderate loss. Its resistance level of index is **26000** and support level of index is **25200**.



INTRADAY DERIVATIVES STOCK RECOMMENDATION



STRATEGY

BHARATFORG– DOWNSIDE TARGET

SELL AT AROUND 675 TARGETS 665-655 STOPLOSS 685

In last trading session **BHARATFORG** future was showing upside favor resistance of **700** levels.

Intraday levels

We expect **BHARATFORG FUT** has support of **675** it can take the resistance at **685** if it breaks its major support of **675** then we can see more downside movement.



STRATEGY

IGL - UPSIDE TARGET

BUY AT AROUND 335 TARGETS 338-341 STOPLOSS 332

In last trading session **IGL FUT** was showing sideways favor support of **314** levels.

Intraday levels

We expect **IGL FUT** has major resistance of **335** it can take the support at **332** if it breaks its major resistance of **335** then we can see more upside movement.

For any Query please feel free to contact Capital Ways Support Team

Quick Contact: 096177-00602

Mail us: info@capitalways.com

Web: www.capitalways.com.

Disclaimer : This document is not for public distribution and is meant solely for the personal information of the authorized recipient. No part of the information must be altered, transmitted, copied, distributed or reproduced in any form to any other person. Persons into whose possession this document may come are required to observe these restrictions. This document is for general information purposes only and does not constitute an investment advice or an offer to sell or solicitation of an offer to buy / sell any commodity / commodity contracts and into intended for distribution in countries where distribution of such material is subject to any licensing, registration or other legal requirements. The information , opinion, views contained in this document are as per prevailing conditions and are of the date of appearing on this material only and are subject to change. No reliance may be placed for any purpose whatsoever on the information contained in this document or on its completeness. Neither Capital Ways Investment Adviser nor any person connected with it accepts any liability or loss arising from the use of this document. The views and opinions expressed herein by the author in the document are his own and do not reflect the views of CAPITALWAYS FINANCIAL SERVICES or any of its associate or group companies. The information set out herein may be subject to updating, completion, revision, verification and amendment and such information may change materially. Past performance is no guarantee and does not indicate or guide to future Nothing in this document is intended to constitute legal, tax or investment advice, or an opinion regarding the appropriateness of any investment, or a solicitation of any type. The contents in this document are intended for general information purposes only. This document or information mentioned therefore should not form the basis of and should not be relied upon in connection with making any investment. The investment may not be suited to all the categories of investors. The recipients should therefore obtain your own professional, legal, tax and financial advice and assessment of their risk profile and financial condition before considering any decision. Capital Ways Investment Adviser, its associate and group companies, its directors, associates, employees from time to time may have various interests/ positions in any of the commodities / commodity contracts mentioned therein or be engaged in any other transactions involving such commodities / commodity contracts or otherwise in other commodities / commodities contracts dealt with by companies / organizations mentioned in the document or may have other potential conflict of interest with respect of an recommendation and / related information and opinions.